

*** The Answers ***

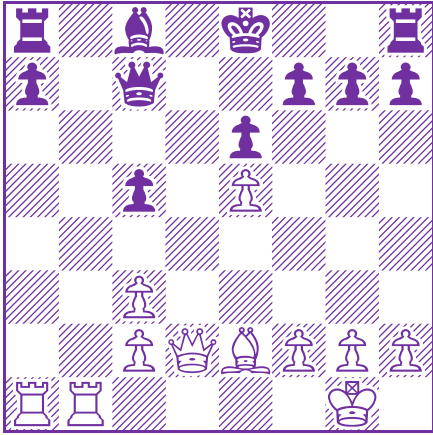
1) First move in the combination might be easy to find. But can you find all the following moves?

MR. Woodcock-Peter E. Williams

British Universities Ch., Preliminaries C

Manchester, Apr. 13 1970

1.e4 e6 2.d4 d5 3.♟c3 ♘b4 4.e5 c5 5.♞f3 ♞c6 6.♙e3 ♖a5 7.♗d2 cxd4 8.♙xd4 ♞ge7 9.♙d3 ♞xd4 10.♞xd4 ♞c6
11.♞xc6 bxc6 12.♙e2 c5 13.O-O d4 14.a3 dxc3 15.axb4 ♖xb4? (White's queen is more active than Black's and should be taken or exchanged as soon as possible. 15...cxd2 is best.) 16.bxc3 ♖b6 17.♞fb1 ♖c7



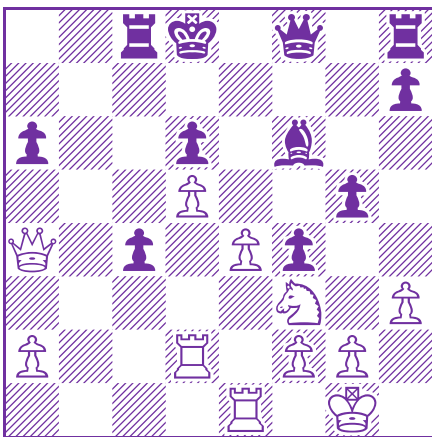
18.♙f3! ♖b8 19.♞xb8 ♖xb8 20.♙c6+ ♙d7 21.♖xd7+ ♗f8 22.♖d6+ ♖xd6 23.exd6 1-0

2) A positional move as well as a tactical one.

GM Arthur Bisguier-Paul Brandts
Manhattan C.C. Ch.
New York, 1967

[Hans Knoch, "Games from Recent Events", Chess Review, May 1967]

1.e4 e5 2.♟f3 ♘c6 3.♞b5 a6 4.♞a4 ♟f6 5.O-O ♞e7 6.♝e2 b5 7.♞b3 d6 8.c3 ♞g4 9.d3 (Intent on rendering the pin on his Knight useless, White avoids 9.d4 as well as the weakening h3.) 9...♟a5 10.♞c2 c5 11.♞e1 ♟c6 12.♟bd2 ♟h5 (Black ought still to castle. He is only compromising his own position in trying to act against White's unweakened Kingside.) 13.♟f1 g5 (And this weakening is too serious. 13...g6 is hardly consistent but playable: 14.Bh6 Bxf3 15.Qxf3 Bg5 16.Bb3 Nf4.) 14.h3! ♟f4 (Black has to save this Knight: 14...Be6 or 14...Bd7 permits 15.Nxe5! etc.) 15.♞xf4 ♞xf3 16.♝xf3 exf4 17.♝h5! (This blockading move thwarts Black's plan thoroughly.) 17...♝b6 18.♞ad1 ♟e5 19.d4 cxd4 20.cxd4 ♞c8 21.♞b3 ♟c4 (Now 21...Nc6 22.e5 makes decisive headway.) 22.♟h2 ♟xb2 23.♝xf7+ ♟d8 24.♞d2 ♟c4 25.♞xc4 bxc4 26.♟f3 ♝b5 27.d5 ♝e8 28.♝g7 ♝f8 29.♝c3 (Naturally White avoids trading Queens. Now the showdown looms on the Queenside while Black's Queen strays on the other wing. 30.Nd4 is a strong threat.) 29...♞f6 30.♝a5+ ♟d7 31.♝a4+ ♟d8



32.♝xa6! (Now White crowns his winning advantage with a charming finish.) 32...♞c3 33.♞b1 ♞xd2 34.♞b7! (The threat is mate in four.) 34...♝f6 35.e5 ♝g6 36.♟xg5 (37.Ne6+ Ke8 38.Qb5+ mates next.) 36...♝e8 37.♟e6 ♝xe6 38.dxe6 1-0

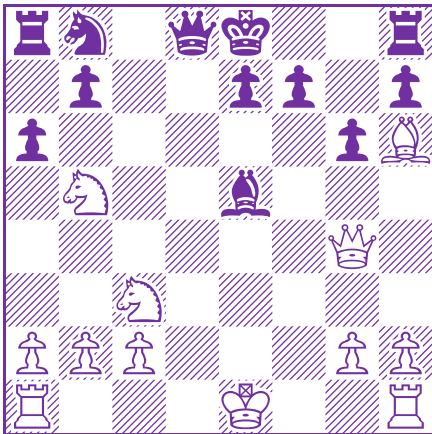
3) Sometimes castling is the best move. And sometimes it is not.

Rachel Crotto-Kathleen Hindle

Women's Ol.

Haifa, Oct. 30, 1976

1.e4 c5 2.♘f3 d6 3.d4 cxd4 4.♗xd4 ♘f6 5.♗c3 g6 6.f4 ♕g7 7.e5 dxe5 8.fxe5 ♗g4 9.♖b5+ ♖d7 (Back rightly avoids 9..Kf8? 10.Ne6+ fxe6 11.Qxd8+ Kf7 12.O-O+. So, what to do now? White plays a simple move and yet winning, move. But White still has yet to prove it.) 10.♝xg4 ♗xb5 11.♗dxb5 ♖xe5 12.♖h6 a6?



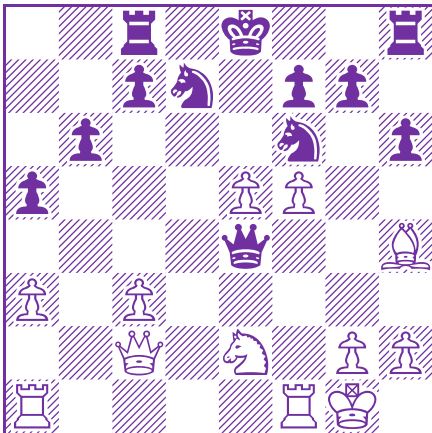
13.♞d1! ♝b6 14.♝c8+ 1-0

4) You don't need to see it all the way to know if a move is good!

Andre Lilienthal-Jose Raul Capablanca

Hastings, 1935

1.d4 ♗f6 2.c4 e6 3.♗c3 ♖b4 4.a3 ♗xc3+ 5.bxc3 b6 6.f3 d5 7.♖g5 h6 8.♖h4 ♖a6 9.e4?! ♗xc4 (Black also has 9...g5 or 9...dxc4 which are probably better.) 10.♖xc4 dxc4 11.♝a4+ ♝d7 12.♝xc4 ♝c6 13.♝d3 ♗bd7 14.♗e2 ♞d8 15.O-O a5 16.♝c2 ♝c4 17.f4 ♞c8 18.f5 18..e5 19.dxe5 ♝xe4 (Possibly better is 19...Qc5+.)



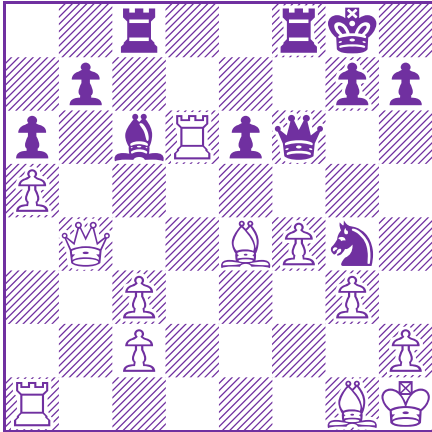
20.exf6!! ♝xc2 (20...Qxh4? 21.fxg7! ; 20...Nxf6 21.Qxe4+ Nxe4 22.Nd4 +/-) 21.fxg7 ♞g8 22.♗d4 ♝e4 23.♞ae1 +- ♗c5 24.♞xe4+ ♗xe4 25.♞e1 ♞xg7 26.♞xe4+ ♝d7 1-0 (27.Re7+)

5) Black only needs one piece!

V. Rubenchik (2308)-Saul Wanetick

US Amateur Team Ch. East, 1996

1.e4 c5 2.♟f3 ♘c6 3.d4 c×d4 4.♞×d4 ♟f6 5.♞c3 d6 6.g3!? ♟d7 7.♟g2 e6 8.O-O a6 9.a4 ♟e7 10.♞h1 O-O 11.f4 ♞×d4 12.♞×d4 ♟c6 13.♟e3 ♞c8 14.a5?! ♞g4 15.♟g1 ♟f6 16.♞b4 ♟×c3 17.b×c3 f5 18.♞fd1 f×e4 19.♞×d6 ♞f6 20.♟×e4?



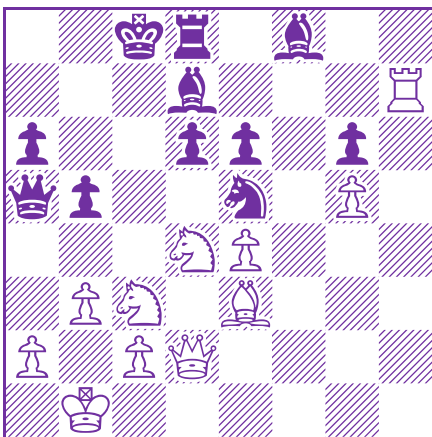
20...♞×c3! 21.♞b1 ♞f3+ 0-1

6) Again, sometimes it just takes one piece. Or two of the same.

GM Inkirov-IM Lukin

Plovdiv, 1984

1.e4 c5 2.♟f3 d6 3.d4 c×d4 4.♞×d4 ♟f6 5.♞c3 a6 6.♟e3 ♞bd7 7.♞d2 e6 8.f3 ♞c7 N 9.g4 h6 10.h4 ♞e5 11.♞g1 ♞fd7 12.f4 ♞c4 13.♟×c4 ♞×c4 14.g5 h×g5 15.h×g5 g6 16.O-O-O b5 17.b3! ♞c7 18.f5 ♞e5?! 19.♞h1 ♞×h1 20.♞×h1 ♟d7 21.f×e6 f×e6 22.♞h7! ♞a5 23.♞b1! O-O-O?



24.♞×e6!! ♟×e6 25.♞d5 b4 (25...Qxd2 26.Rc7+ Kb8 27.Ba7+ Ka8 28.Nb6#) 26.♟b6 1-0 (26...Qb5 27.Rc7+ Kb8 28.Ba7+ Ka8 29.Nb6+)